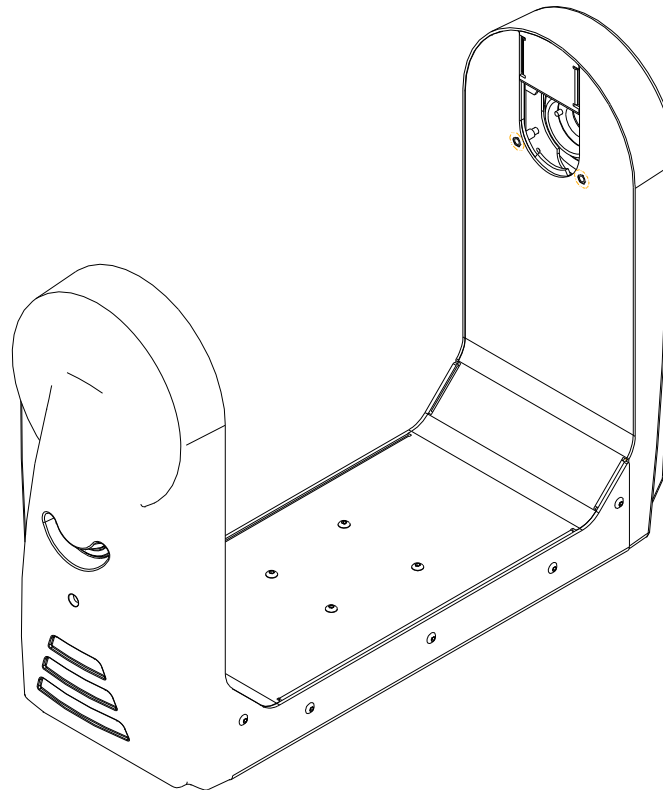


TZA003

REV.	DESCRIPTION	DATE	ENG	ECO #	APPR
1	CREATE DRAWING	24SEP07	KLB		
2	UPDATE DRAWING VIEWS AND BOM BALLOONS	14DEC07	PP		
3	REMOVE UNSUED IDLER PARTS FROM BOM	22FEB08	PP		MB
4	REMOVE TILT TUBES AND RETAINING RING, ADD TO TZA004	05MAR08	PP		MB
5	ADD ITEM 31, CORRECT BOM BALLOONS, NEW ITEM 6	17MAR08	PP		MB
6	ADD ITEM 49, ADD 2X ITEM 25.	29MAR08	PP		MB

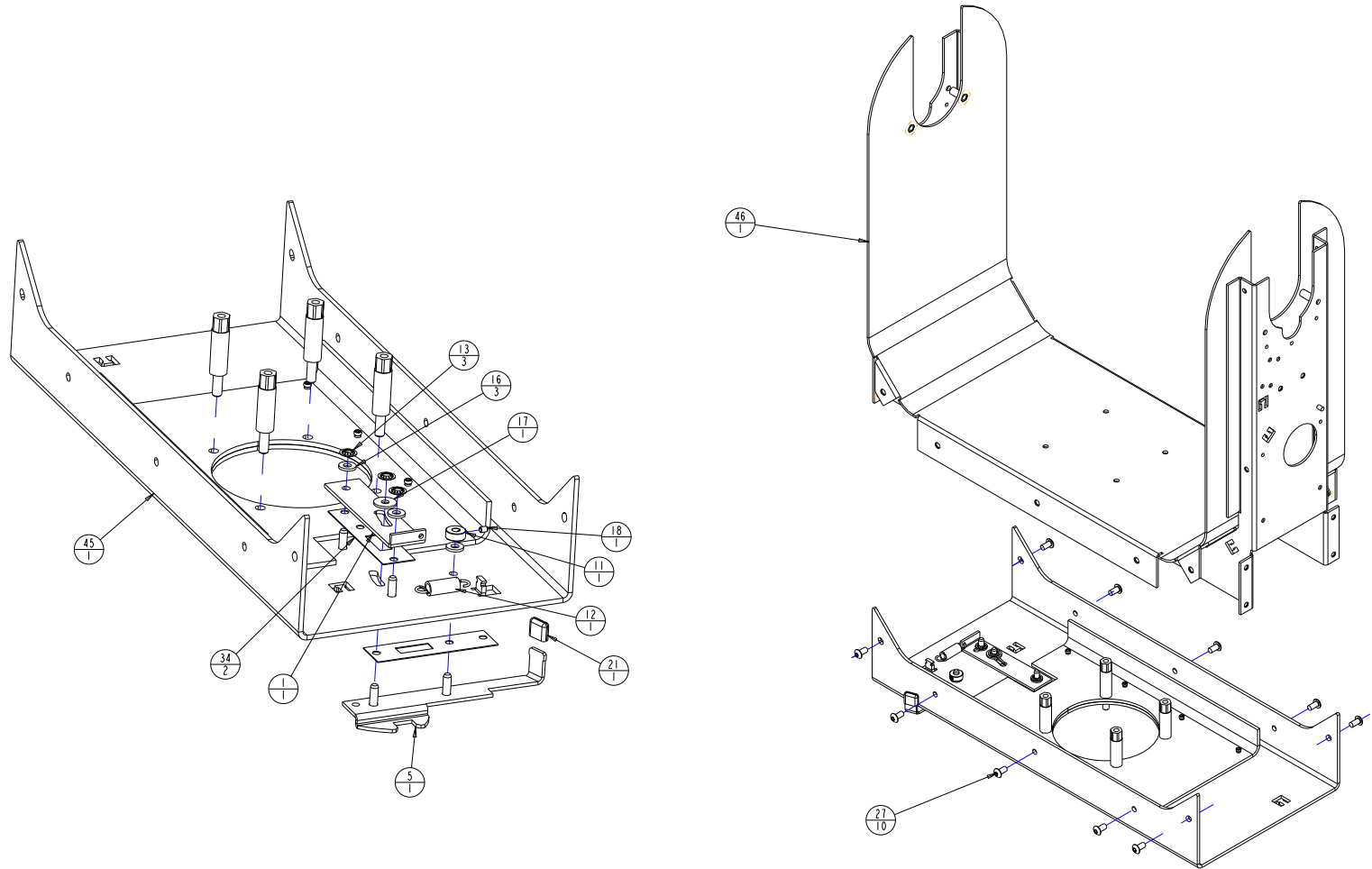
49	1	CAT197	99263112	B	BRACKET,WIRE GUIDE,LEFT,DL
48	1	CATA031	NA	4	LATCH, ASSY, TILT, DL1
47	1	TW502	INTERNAL	2	MOTOR, ENCODER ASSEMBLY MEA1
46	1	TWA093	CHARTED	B	YOKE, WELDED ASSY PAINTED SG
45	1	DB195	CHARTED	D	SUPPORT,REINFORCED YOKE BASE DL2
44	1	F5709	80040022EF	I..0	BOARD,ASSY X-SPOT FLAG HOMING SENSOR
43	1	TW335	99430126	-	PINION ASSY I7T 3MM HTD, LOW PROFILE
42	1	CAT317	99430107	B	GEAR, PULLEY, 170T TILT/PAN DRIVE, DL1
41	1	TW380	99400097	A	HUB,TILT SENSOR SG
40	1	TW503..TENSIONED	99360049	.	BELT, TIMING 3MM HTD, 305 GROOVE, 6MM
39	1	CAT328	99360041	A	PULLEY, ADAPTOR, TILT, DL1
38	1	CAT198	99263113	D	BRACKET,WIRE GUIDE,RIGHT,DL
37	1	TW529	99260506	B	BRACKET,TILT SENSOR, SG
36	2	TW526	99260504	D	MOUNT,TILT MOTOR, SG
35	2	CAT186	99260424	B	BRACKET,YOKE ARM COVER RETAINER DL
34	2	DB210	99190090	-	SHIM, PAN LATCH, DL2
33	1	TW519	99080311	B	PLATE,TILT SENSOR SG
32	1	NUTM4KEP	91201204	.	NUT,M4 KEPS
31	4	DB330	91200667	C	STANDOFF, M5-0.8 X 42.7 HEX M-F STEEL
30	4	SCREWMS5AC20SSP	91100520	.	SCREW,M5 SOCKET CAP 20 SS W/PATCH
29	4	SCREWMS5AC10SSP	91100510	.	SCREW,M5 SOCKET CAP 10 SS W/PATCH
27	14	SCREWMS5AB10BZP	91010510	.	SCREW,M5 BUTTON 10 BZ W/PATCH
26	8	SCREWMA4B08BZP	91010408	.	SCREW,M4 BUTTON 08 BZ W/PATCH
25	6	SCREWMA3B06BZP	91010306	.	SCREW,M3 BUTTON SOCKET HD 06 BZ W/PATCH
24	2	SCREWMA4C25W-BZ	91000425	.	SCREW,M4 SOCKET CAP 25 BZ SEMS
23	8	SCREWMA4C08BZ	91000408	.	SCREW,M4 SOCKET CAP 08 BZ SEMS
22	4	SCREWMA4C06W-BZ	91000406	.	SCREW,M4 SOCKET CAP 06 BZ SEMS
21	1	CAP..090X.437I.D..SILVER	90724014	.	CAP, .090 X .437 I.D., PUSH ON, NY, SILVER
20	4	SCREW6-19PP250TL-SZ	90709123	.	SCREW,6-19 PHIL PAN 1/4 SZ PLASTITE
19	2	SCREW10-14PP500TL-SZ	90709062	.	SCREW,10 PHIL PAN 1/2 PLASTITE SZ
18	1	SCREW6-32AS188BZ	90707093	.	SCREW,6-32 SOCKET SET 3/16 BO PTCH FT PT
17	1	SP132	90706083	A	WASHER, THRUST, OPTICAL MODULE ASSY
16	3	WASHER10-204X440SS	90706012	.	WASHER,FLAT #10 SS
15	2	SCREW8-18SH875ABTYPE-SS	90704040	.	SCREW,8 HEX HEAD 7/8 SHEET METAL SS
14	4	STANDOFF_M4X6_M-F	90702376	.	STANDOFF,6MM X 6MM L M/F M4 ALUM
13	3	RETAINER_PUSH_5MM	90701364	.	RETAINER,PUSH-ON,5MM SHAFT
12	1	SPRING360.1120EXT	90701340	.	SPRING, EXTENSION .360 X 1.12 LG
11	1	SW329	90701187	-	STOP, WHEEL RETAINER
10	6	SCREWMA4C10W-BZ	91000410	.	SCREW,M4 SOCKET CAP 10 BZ SEMS
9	1	CATA056	80480013	A	COVER,ASSY YOKE ARM, LATCH SIDE DL
8	1	CATA055	80480011	A	COVER, ASSY YOKE ARM DL1
7	2	FSA089	80360009	A	DAMPENER,BRAKE ASSY PAN X-SPOT/SG
6	1	TW547	99080327	A	PLATE, TILT STOP V2
5	1	DB134	80071849	D	LATCH, PAN LEVER
4	2	CAT181	80071806	E	PLATE, TILT BEARING RETAINER BLK DL1
3	4	TW542	80070473	A	PLATE,COUNTERWEIGHT, OKE SG
2	2	TW517	80070464	A	STOP, TILT TUBE SG
1	1	DB143	80070392	A	PLATE,DETENT,PAN LATCH, PLATED DL2



UNLESS OTHERWISE SPECIFIED	RELEASE DATE:	CE:	High End	2105 GRACY FARMS LANE AUSTIN, TEXAS 78758	
DIMENSIONAL TOLERANCES: 0 PLACE DECIMAL = ±0.38 1 PLACE DECIMAL = ±0.25 2 PLACE DECIMALS = ±0.13 ANGLES = ±0.5°	ENG: K. BICKERS	QA:	MEG:	(512) 836-2242 FAK (512) 832-4128 http://www.highend.com	
FOR PAINTED PARTS REFER TO ENG. SPEC. MANUAL WI-0592	MATERIAL: CHARTED	FINISH: NA		DRW: PETE PHILLIPS DESCRIPTION: YOKE, SUB-ASSY MEA4	
ALL COMPONENTS, MATERIALS AND FINISHES TO BE RSHS COMPLIANT	FINISH:	PART NO.		DRAWING NO.	
MIN. DRAFT	MIN. RADIUS	INTERNAL		TZA003	
FLATNESS	THICKNESS	SI METRIC A1		REV. 6	
VOLUME	THIRD ANGLE PROJECTION	DO NOT SCALE		SCALE: 0.280 SHEET: 1 OF 4	

PROPRIETARY NOTICE: THIS DOCUMENT CONTAINS CONFIDENTIAL AND PROPRIETARY INFORMATION OF HIGH END SYSTEMS INC., (ALSO DBA LIGHTWAVE RESEARCH) AND IS GIVEN TO THE RECEIVER IN CONFIDENCE. THE RECEIVER ACCEPTS AND AGREES THAT, EXCEPT AS AUTHORIZED BY HIGH END SYSTEMS, THE RECEIVER WILL NOT PERMIT THE USE OF THE DOCUMENT OR ANY COPY THEREOF OR THE INFORMATION THEREIN, WILL NOT COPY OR PERMIT COPYING THE DOCUMENT OR EITHER THE DOCUMENT OR THE INFORMATION THEREIN, AND WILL UPON COMPLETION OF THE NEED TO RETURN THE DOCUMENT, OR UPON DEMAND, RETURN THE DOCUMENT WITHOUT RETAINING ANY OF THE INFORMATION CONTAINED THEREIN IN ANY FORM WHATSOEVER.

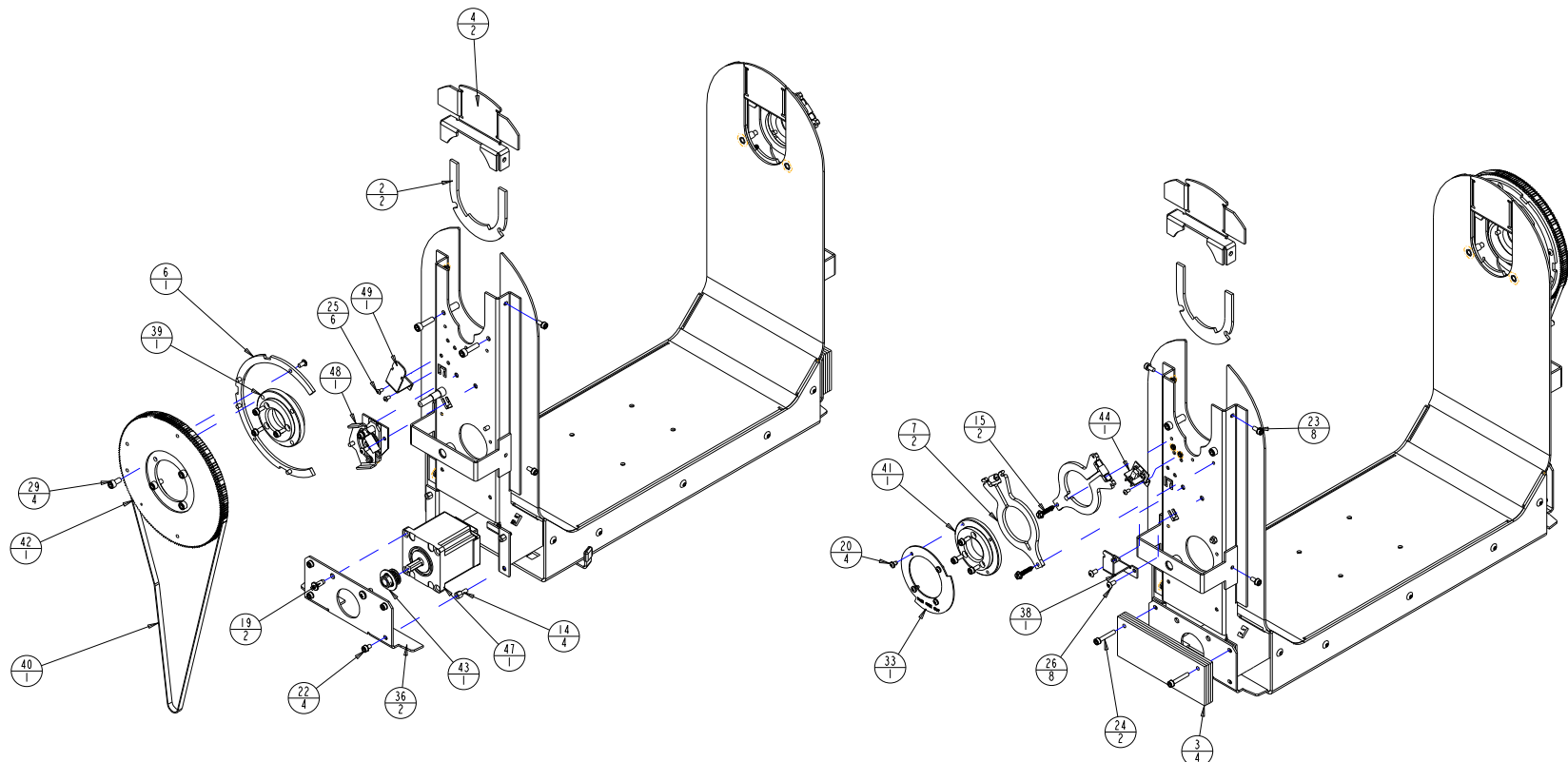
TZA003



UNLESS OTHERWISE SPECIFIED		RELEASE DATE:	CE:	2105 GRACY FARMS LANE AUSTIN, TEXAS 78758 (512) 836-2242 FAX (512) 832-4128 ***** <a href="http://www.highend.com">http://www.highend.com</a>	
DIMENSIONAL TOLERANCES:		ENG: K. BICKERS	OA:		
0 PLACE DECIMAL = ±0.38		ME:			
1 PLACE DECIMAL = ±0.25		MEG:	DRW: PETE PHILLIPS		
2 PLACE DECIMALS = ±0.13		DESCRIPTION:			
ANGLES = ±0.5°		YOKE, SUB-ASSY MEA4			
FOR PAINTED PARTS REFER TO		MATERIAL:		FINISH:	
ENG. SPEC. MANUAL WI-0592		CHARTED		NA	
ALL COMPONENTS, MATERIALS AND		INTERPRET DIMENSIONS PER		PART NO.	DRAWING NO.
FINISHES TO BE RSHS COMPLIANT		ASME Y14.5M-1994		INTERNAL TZA003	REV.
MIN. DRAFT		THIRD ANGLE PROJECTION			6
MIN. RADIUS		DIMENSIONS ARE IN MILLIMETERS		DO NOT SCALE	SCALE: 0.280
FLATNESS		SI METRIC A1		SHEET: 2 OF 4	
THICKNESS					
VOLUME					

**PROPRIETARY NOTICE:**  
 THIS DOCUMENT CONTAINS CONFIDENTIAL AND PROPRIETARY INFORMATION OF HIGH END SYSTEMS INC., (ALSO DBA LIGHTWAVE RESEARCH) AND IS GIVEN TO THE RECEIVER IN CONFIDENCE. THE RECEIVER ACCEPTS AND AGREES THAT, EXCEPT AS AUTHORIZED BY HIGH END SYSTEMS, THE RECEIVER WILL NOT PERMIT THE USE OF THE DOCUMENT OR ANY COPY THEREOF OR THE INFORMATION THEREIN, WILL NOT COPY OR PERMIT COPYING THE DOCUMENT OR THE INFORMATION THEREIN, AND WILL UPON COMPLETION OF THE NEED TO RETAIN THE DOCUMENT, OR UPON DEMAND, RETURN THE DOCUMENT WITHOUT RETAINING ANY OF THE INFORMATION CONTAINED THEREIN IN ANY FORM WHATSOEVER.

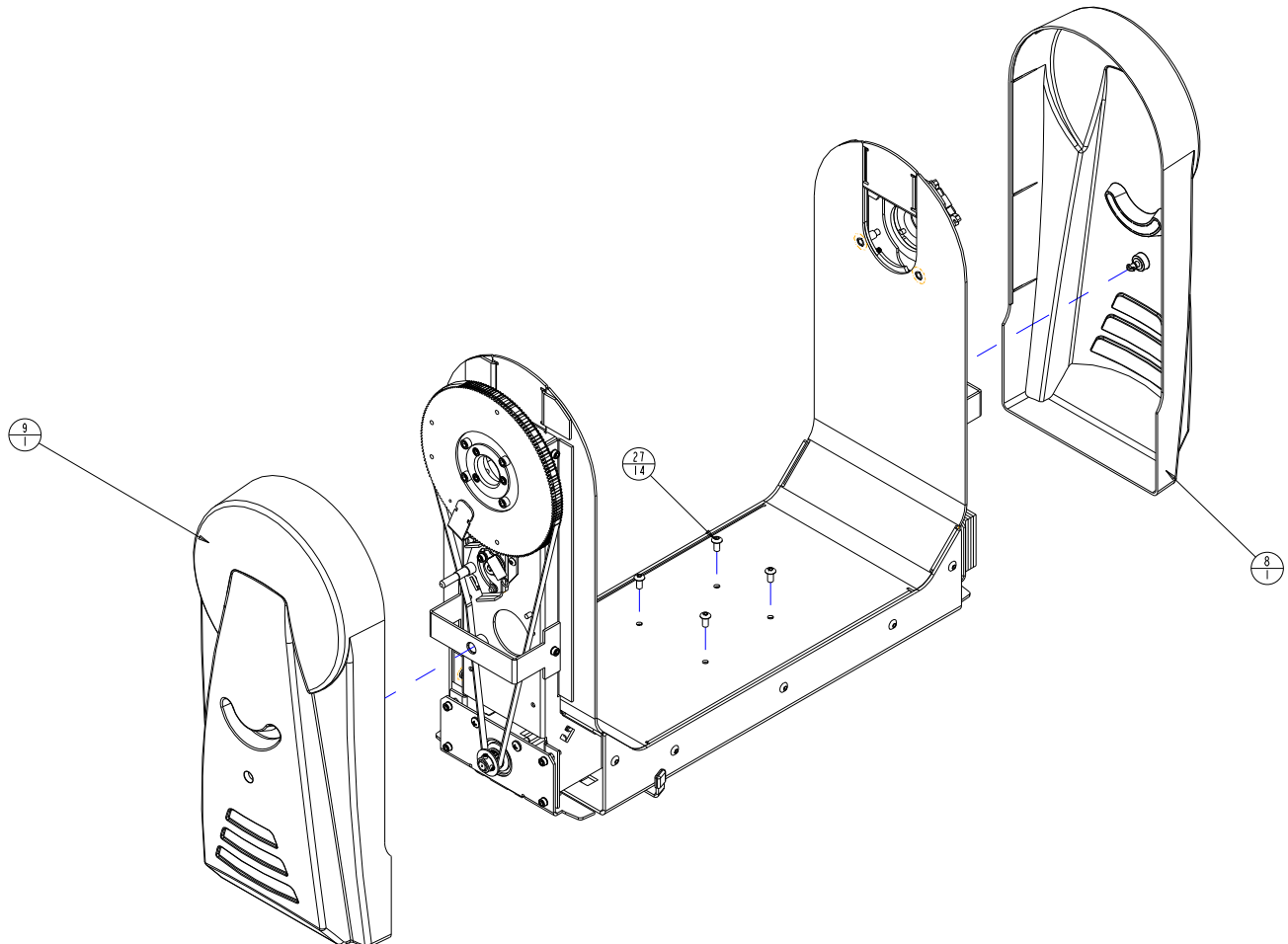
TZA003



**PROPRIETARY NOTICE:**  
 THIS DOCUMENT CONTAINS CONFIDENTIAL AND PROPRIETARY INFORMATION OF HIGH END SYSTEMS INC., (ALSO DBA LIGHTWAVE RESEARCH) AND IS GIVEN TO THE RECEIVER IN CONFIDENCE. THE RECEIVER ACCEPTS AND AGREES THAT, EXCEPT AS AUTHORIZED BY HIGH END SYSTEMS, THE RECEIVER WILL NOT PERMIT THE USE OF THE DOCUMENT OR ANY COPY THEREOF OR THE INFORMATION THEREIN, WILL NOT COPY OR PERMIT COPYING THE DOCUMENT OR THE INFORMATION THEREIN, AND WILL UPON COMPLETION OF THE NEED TO RETAIN THE DOCUMENT, OR UPON DEMAND, RETURN THE DOCUMENT WITHOUT RETAINING ANY OF THE INFORMATION CONTAINED THEREIN IN ANY FORM WHATSOEVER.

UNLESS OTHERWISE SPECIFIED		RELEASE DATE:	CE:	High End 2105 GRACY FARMS LANE AUSTIN, TEXAS 78758 (512) 836-2242 FAX (512) 832-4128 ***** http://www.highend.com	LR LIGHTWAVE RESEARCH
DIMENSIONAL TOLERANCES: 0 PLACE DECIMAL = ±0.38 1 PLACE DECIMAL = ±0.25 2 PLACE DECIMALS = ±0.13 ANGLES = ±0.5°		ENG: K. BICKERS	OA:		
FOR PAINTED PARTS REFER TO ENG. SPEC. MANUAL WI-0592		MATERIAL: CHARTED	FINISH: NA		
ALL COMPONENTS, MATERIALS AND FINISHES TO BE RSHS COMPLIANT		DESCRIPTION: YOKE, SUB-ASSY MEA4			
MIN. DRAFT	INTERPRET DIMENSIONS PER ASME Y14.5M-1994 THIRD ANGLE PROJECTION DIMENSIONS ARE IN MILLIMETERS	SI METRIC A1		PART NO. INTERNAL TZA003	DRAWING NO. 6
MIN. RADIUS		DO NOT SCALE		SCALE: 0.280	SHEET: 3 OF 4
FLATNESS					
THICKNESS					
VOLUME					

TZA003



**PROPRIETARY NOTICE:**  
 THIS DOCUMENT CONTAINS CONFIDENTIAL AND PROPRIETARY INFORMATION OF HIGH END SYSTEMS INC., (ALSO DBA LIGHTWAVE RESEARCH) AND IS GIVEN TO THE RECEIVER IN CONFIDENCE. THE RECEIVER ACCEPTS AND AGREES THAT, EXCEPT AS AUTHORIZED BY HIGH END SYSTEMS, THE RECEIVER WILL NOT PERMIT THE USE OF THE DOCUMENT OR ANY COPY THEREOF OR THE INFORMATION THEREIN, WILL NOT COPY OR PERMIT COPYING THE DOCUMENT WILL NOT DISCLOSE TO OTHERS EITHER THE DOCUMENT OR THE INFORMATION THEREIN, AND WILL UPON COMPLETION OF THE NEED TO RETAIN THE DOCUMENT, OR UPON DEMAND, RETURN THE DOCUMENT WITHOUT RETAINING ANY OF THE INFORMATION CONTAINED THEREIN IN ANY FORM WHATSOEVER.

UNLESS OTHERWISE SPECIFIED		RELEASE DATE:	CE:	2105 GRACY FARMS LANE AUSTIN, TEXAS 78758 (512) 836-2242 FAX (512) 832-4128 ***** http://www.highend.com	
DIMENSIONAL TOLERANCES:		ENG: K. BICKERS	OA:		
0 PLACE DECIMAL = ±0.38		ME:			
1 PLACE DECIMAL = ±0.25		MEG:	DRW: PETE PHILLIPS		
2 PLACE DECIMALS = ±0.13		DESCRIPTION:			
ANGLES = ±0.5°		YOKE, SUB-ASSY MEA4			
FOR PAINTED PARTS REFER TO		MATERIAL:		FINISH:	
ENG. SPEC. MANUAL WI-0592		CHARTED		NA	
ALL COMPONENTS, MATERIALS AND FINISHES TO BE R6HS COMPLIANT		INTERPRET DIMENSIONS PER		PART NO.	DRAWING NO.
MIN. DRAFT	ASME Y14.5M-1994	INTERNAL	TZA003	REV.	6
MIN. RADI	THIRD ANGLE PROJECTION	SI METRIC A1			
FLATNESS	DIMENSIONS ARE IN MILLIMETERS	DO NOT SCALE		SCALE: 0.280	SHEET: 4 OF 4
THICKNESS					
VOLUME					